

Agenda



- 10:00 Welcome & ACIT-Hub intro
- 10:15 Learning Journeys
 - JADE 2.5 an AMD system
Greg Tourte (University of Oxford)
 - Isambard Cloud
Matt Williams (University of Bristol)
 - Datacenters
Dugan Witherick (Imperial College London)
- 11:00 Discussions
Training Content
- 12:30 Lunch
- 13:30 ACIT Hub Training and CPD
- 13:45 Learning Journeys
 - Becoming Agile in Research Computing
Jaydeep Mody (University of Surrey)
 - Building an RTP team
Clare Gryce (University of Sussex)
- 14:15 Discussions
Training methods & CPD
- 15:45 Closing thoughts
- 16:00 Close

Code of Conduct



- Provide a harassment-free experience for everyone, regardless of gender, sexual orientation, disability, physical appearance, body size, race, or religion.
- All communication should be appropriate for a professional audience including people of many different backgrounds.
- Be kind to others. Do not insult or put down other attendees. Behave professionally. Remember that harassment and sexist, racist, or exclusionary jokes are not appropriate
- No Video - Chatham House Rules – free to use the information but not reveal the identity or affiliation of the speaker

Based on RSLondon, CW19 and RSE18 which are in turn based on the example anti-harassment policy from the Geek Feminism wiki, created by the Ada Initiative and other volunteers under CC0 license.

- EDI Monitoring for today
- Not interested in individual data
 - All data disassociated at source
- Interested in community
 - Where do we come from?
 - What are our needs?
- Still learning – give us feedback!



ACIT-HUB

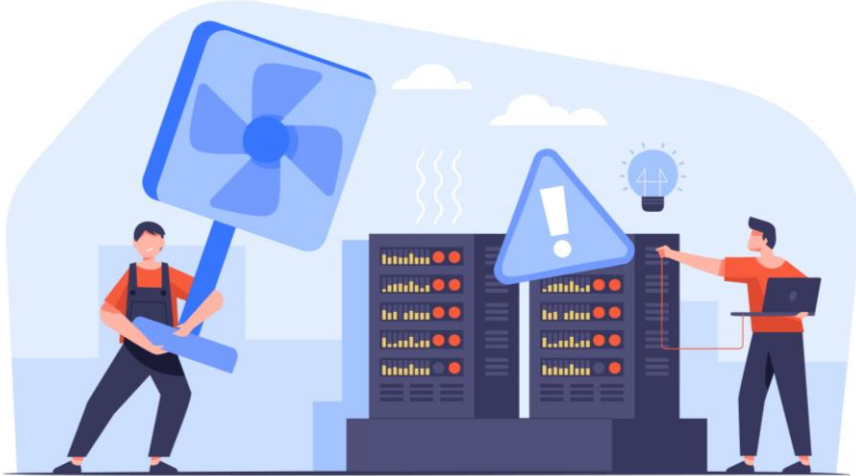
ACCELERATED COMPUTE
INFRASTRUCTURE TRAINING HUB

Helen Cooper
Wednesday 9th July 2025
Bristol CoDesign Day

RIE's?

Research Infrastructure Engineers

Who you call when HPC breaks



RIE superheroes



**Experts in
everything**

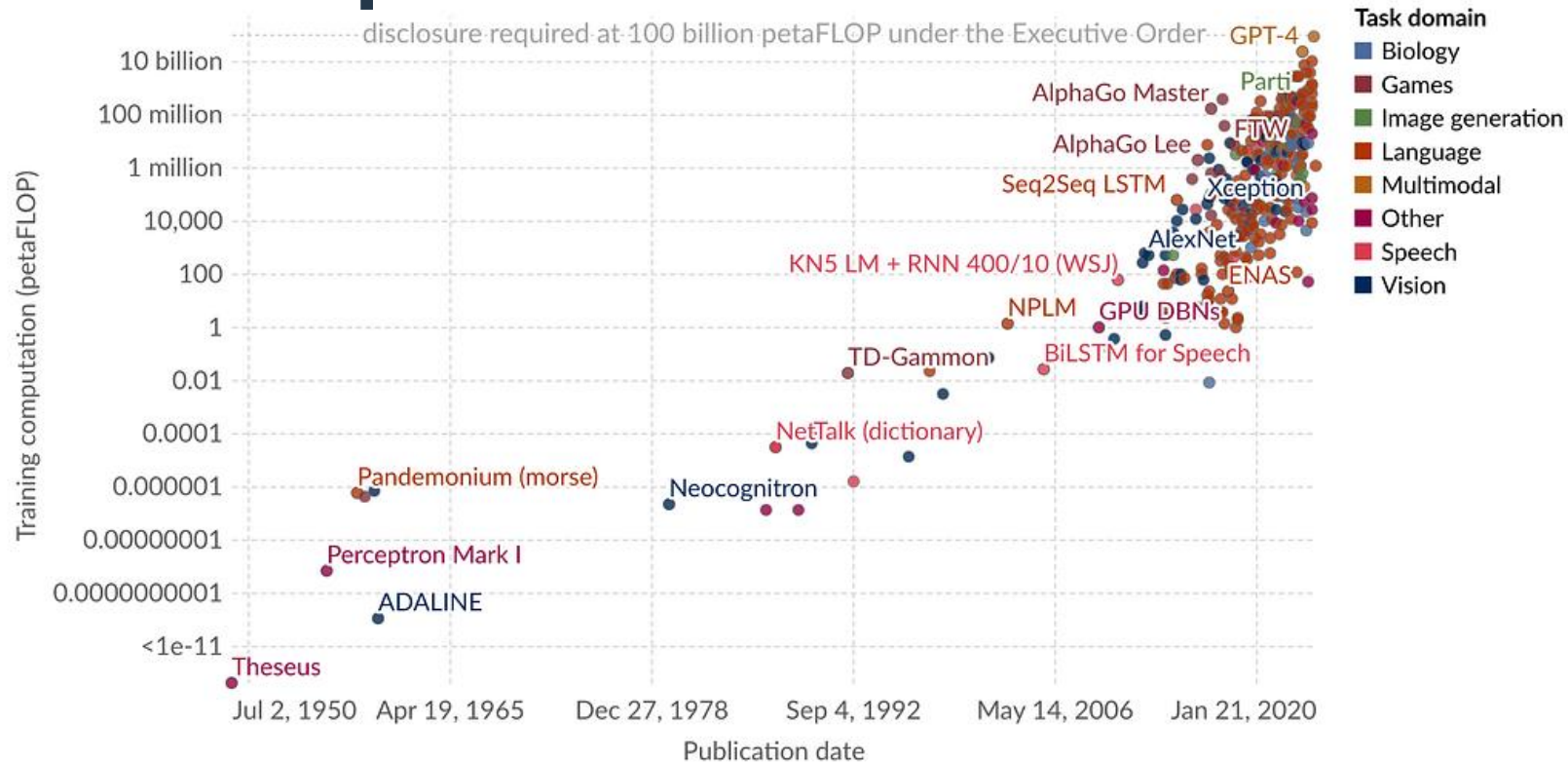
RIE super teams



The AI 'Issue'



Computation used for AI Models



Data source: Epoch (2024)

OurWorldInData.org/artificial-intelligence | CC BY

More Compute - More Models – Different Culture

Team



Dr Helen Cooper



Mr Dean Roe



Dr Jaydeep Mody



Prof Mark Plumbley



Mr Andrew Gittings



Prof Wesley Armour



Dr Twin Karmakharm



Dr Matthew Williams

IMPERIAL



Dr Andrew Richards



Dr Dugan Witherick

Supporters



RTP Networks



Research Networks

BMVA



Technology



Vendors

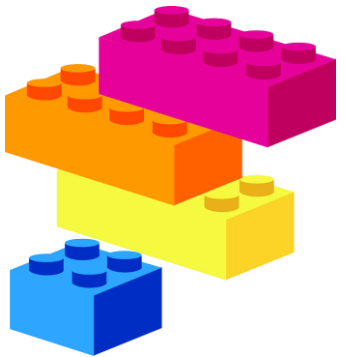


Hewlett Packard
Enterprise



Vision

**Training
building blocks**



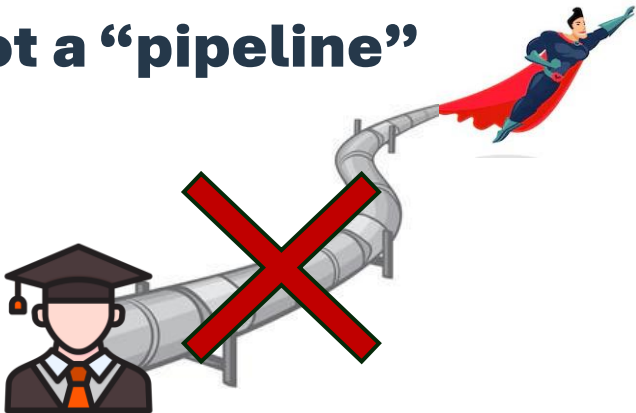
**Skills gap
analysis**



RIE superheroes



Not a “pipeline”



RIE super teams



**Connected
and agile
talent pool**



**Value and
recognition**



Broad Topics



Accelerators

**Storage & Data
Management**

**Networking &
Datacentres**

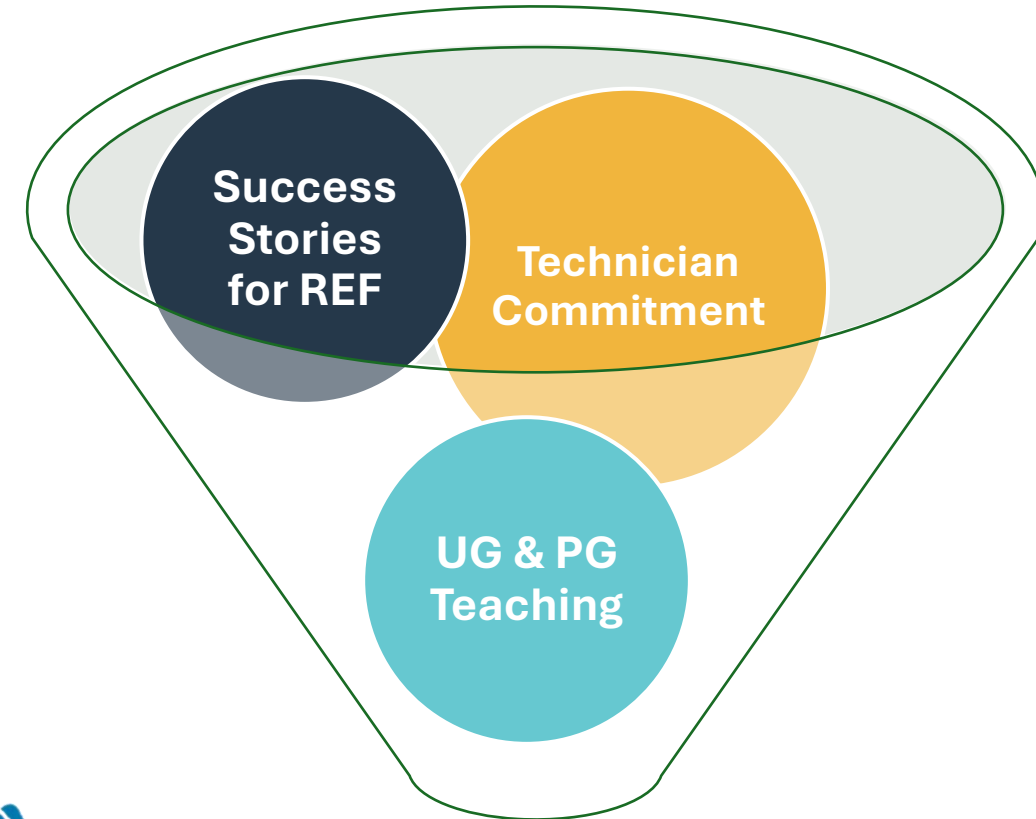
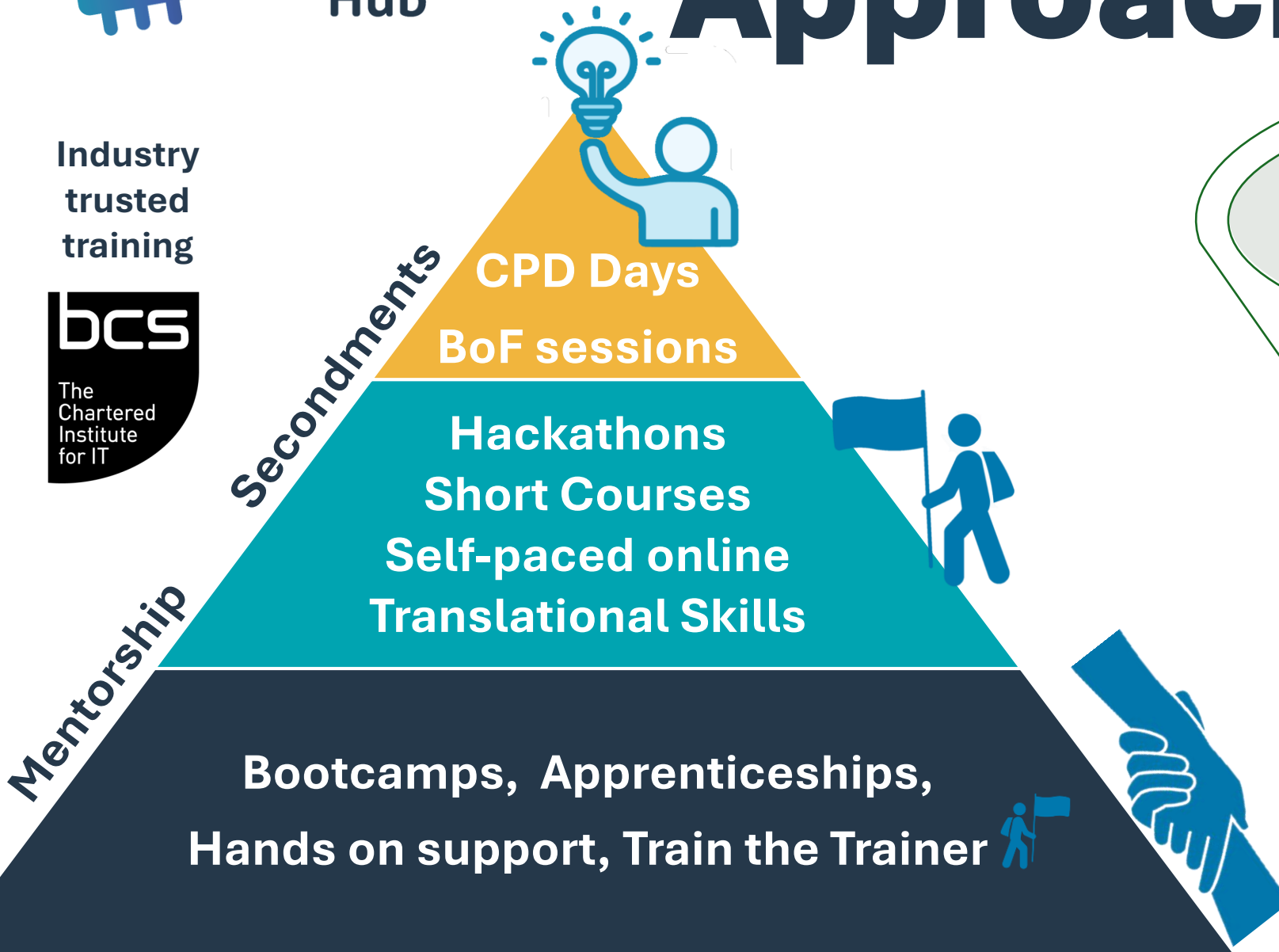
Orchestration

Cloud

**Professional
Development**

Approach

Industry
trusted
training



**Academia
Valued Metrics**

Links!

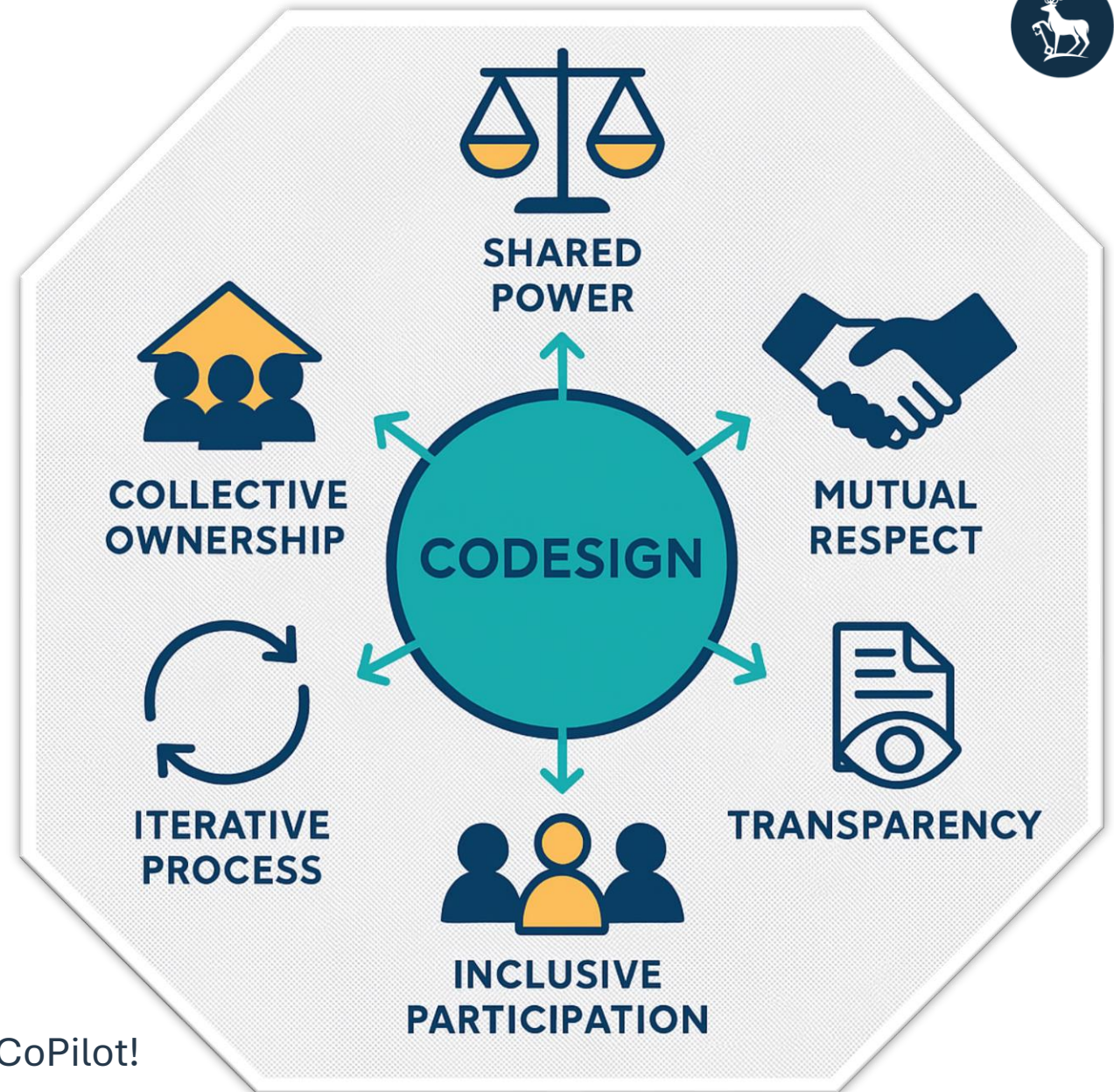
- **ACIT.surrey.ac.uk**



- **ACIT@jiscmail.ac.uk**



CoDesign is a collaborative approach that brings together diverse voices to shape solutions that are inclusive, effective, and sustainable. *



*Thanks CoPilot!

Discussions



What do you need to climb this mountain?

- World Café style (loosely)
- 15 – 20 mins per session
- Chair stays at their table to share ideas to the new group
- Group moves to different tables
- After 4 sessions we 'Harvest' each table

